



consulting engineers

SHEPHERD • GILMOUR
consulting engineers

consulting engineers



an introduction to the Shepherd Gilmour Group

Established in 1959, Shepherd Gilmour is a leading consultancy practice, with a multi-million pound turnover. We employ over one hundred and fifty people in six offices, on construction projects located throughout the United Kingdom. We can offer expertise in most areas including structures, infrastructure, environment, CDM and Party Walls.

We are involved in construction projects in all commercial sectors, with on-going projects totalling several hundred millions of pounds.

Directors of the group are members of the Institution of Structural Engineers (IStructE), Institution of Civil Engineers (ICE), Association for Consultancy and Engineering (ACE), and Association for Project Safety (APS).

We offer the client a single point of contact. The Director running the project will oversee and co-ordinate the activities of the group as a whole to ensure we provide a smooth, efficient and timely service.

The group works together on projects of all type. This is a particular advantage on problem sites, which have been undeveloped for many years for reasons such as contamination, topography or isolation from the surrounding infrastructure.



The group acts in a phased manner to address these issues. We carry out pre-acquisition assessments including desk studies, environmental assessments, site investigations, flood risk assessments, surveys of existing buildings and advice on remediation and ground modelling.

After purchase we assist in the implementation of any remediation and re-engineering and we can design links to the surrounding transport network and services infrastructure. If necessary we can obtain appropriate adoption certificates.

Finally we work with the client's design team in the last phase of building design and on-site infrastructure.

Projects illustrated (opposite - left to right)
Daresbury Office Park, Cheshire (£30m)
City South, Manchester (£13m)

Projects illustrated (above - clockwise)
British Aerospace, Broughton (£13m)
Village Leisure Hotels, (Nationwide total £120m)
Stoke Schools Joint Venture, (£125m PFI)

Projects illustrated (back cover - left to right)
Cobbetts Offices, Manchester (£20m)
Salford University (£16m)
Whitworth Street, Manchester (£18m)

Manchester
Castlefield House
29 Ellesmere Street
Manchester
M15 4LZ

t: 0161 832 7802
f: 0161 832 1540

London
The Old Town Hall
105 High Street
Rickmansworth
Hertfordshire
WD3 1AN

t: 01923 777 070
f: 01923 896 332

Leicester
Tower Court
42 Tower Street
Leicester
LE1 6WT

t: 0116 233 7676
f: 0116 233 7677

Leeds
7 Marshall Court
Marshall Street
Leeds
LS11 9YJ

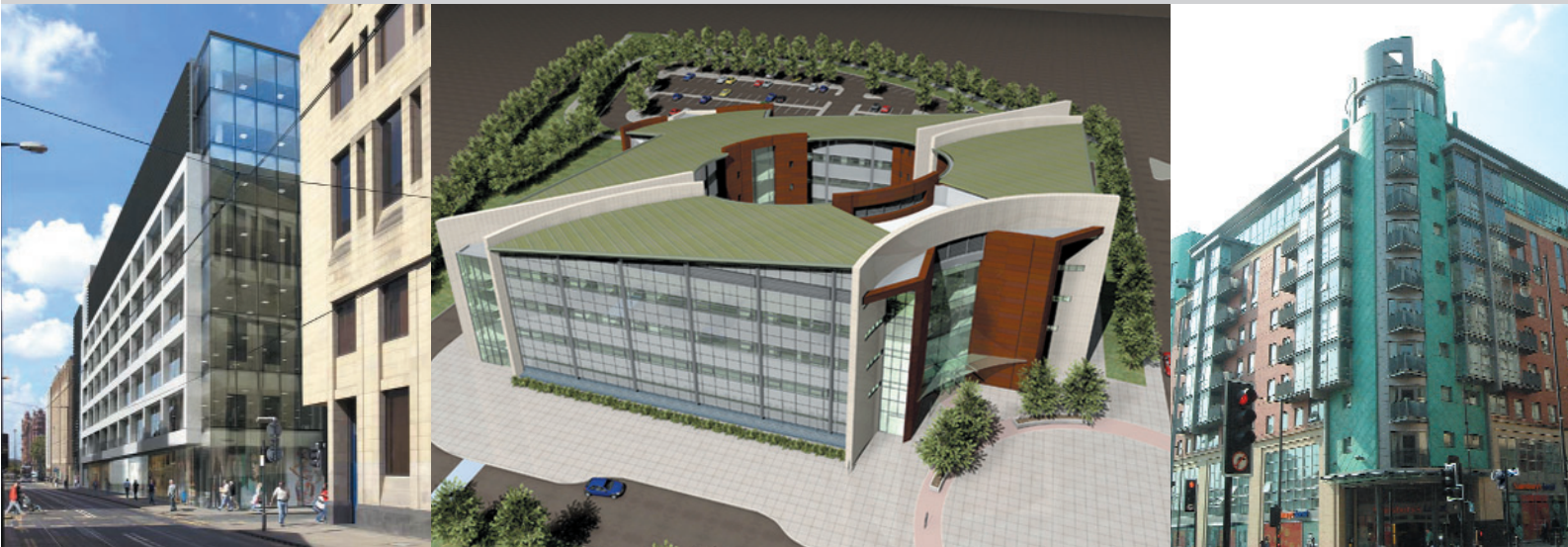
t: 0113 245 1393
f: 0113 245 0807

Llandudno
10a Mostyn Avenue
Craig-y-Don
Llandudno
LL30 1YS

t: 01492 879 069
f: 01492 879 778

Newcastle-Under-Lyme
4 Cherry Orchard
Ryecroft
Newcastle-Under-Lyme
Staffordshire
ST5 2UB

t: 01782 625 376
f: 01782 712 265



consulting engineers

Manchester
e: manchester@shepherd-gilmour.co.uk

London
e: london@shepherd-gilmour.co.uk

Leicester
e: leicester@shepherd-gilmour.co.uk

Leeds
e: leeds@shepherd-gilmour.co.uk

Llandudno
e: llandudno@shepherd-gilmour.co.uk

Newcastle-Under-Lyme
e: newcastle@shepherd-gilmour.co.uk

w: www.shepherd-gilmour.co.uk

SHEPHERD • GILMOUR
structures

SHEPHERD • GILMOUR
infrastructure

SHEPHERD • GILMOUR
environment

SHEPHERD • GILMOUR
cdm

SHEPHERD • GILMOUR
party walls